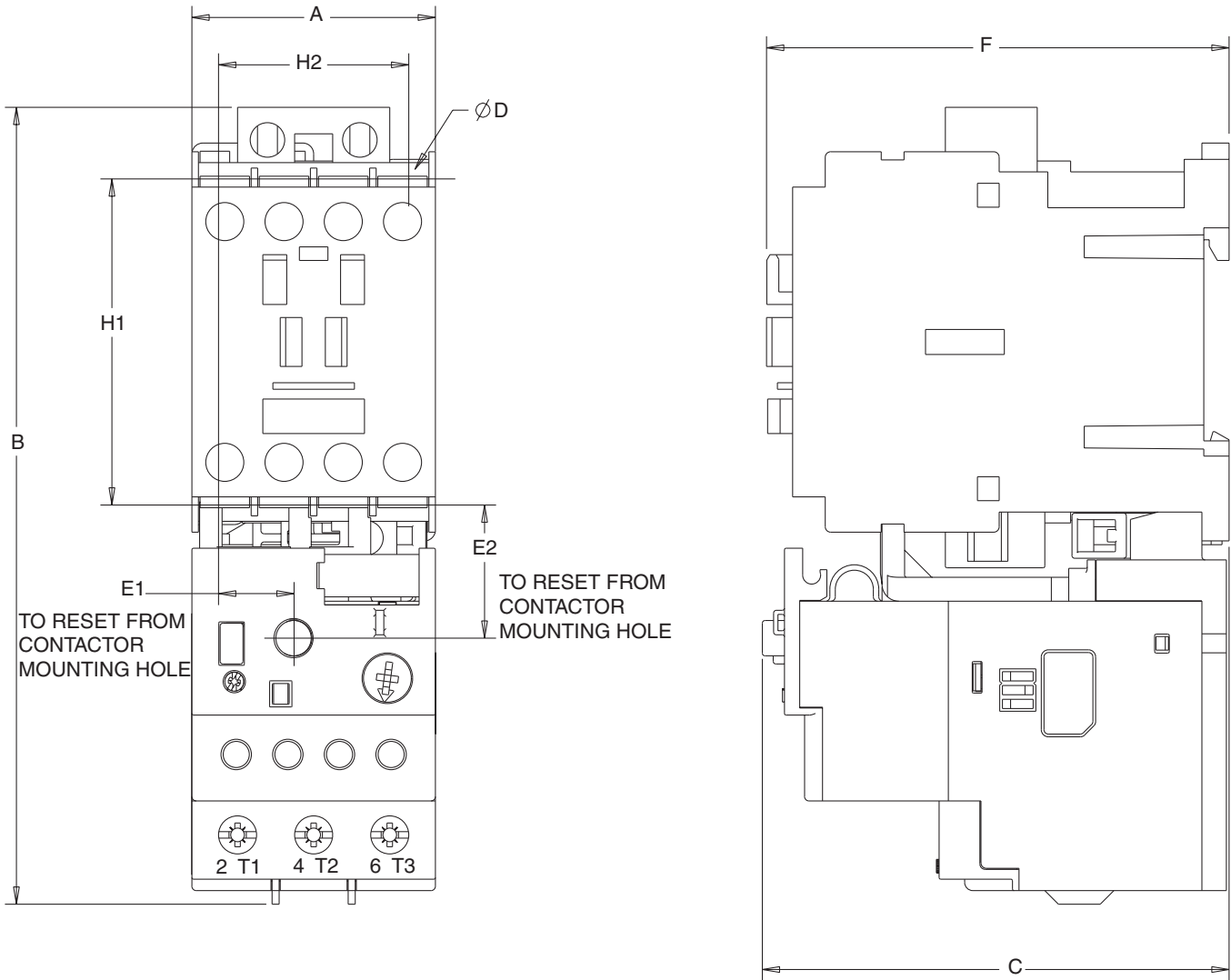


# E1 Plus Solid-State Overload Relays

## Approximate Dimensions

Dimensions are shown in millimeters (inches). Dimensions are not intended to be used for manufacturing purposes.

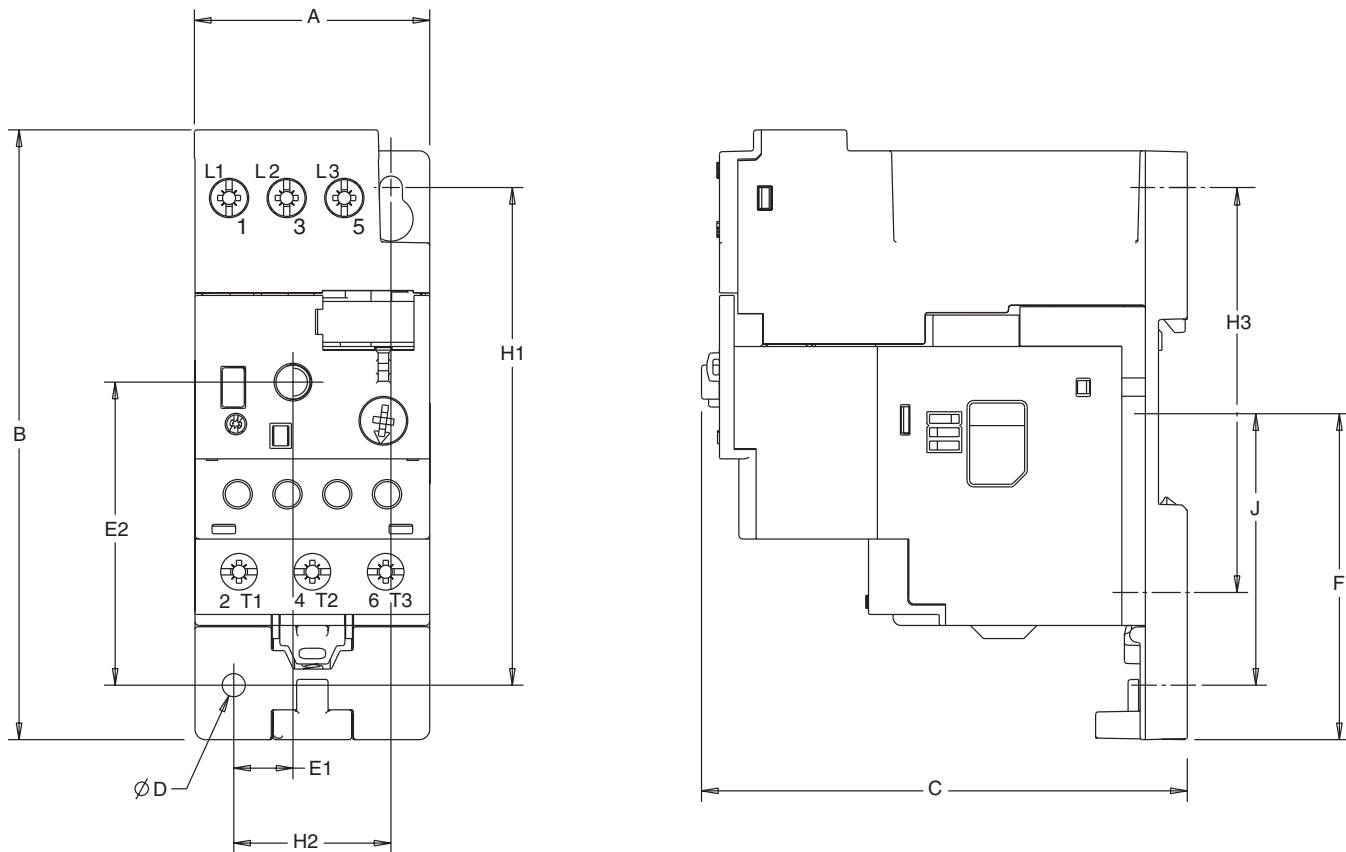
### 100-C Mounted



Overload Cat. No.	Contactor Cat. No.	A Width	B Height	C Depth	D	E1	E2	F	H1	H2
193-ED__B 193-EE__B 193R-EE__B 193S-EE__B	100-C09 100-C12 100-C16 100-C23	45 (1-25/32)	146.6 (5-25/32)	85.2 (3-23/64)	4.5 (3/16)	13.9 (35/64)	24.5 (31/32)	86.5 (3-13/32)	60 (2-23/64)	35 (1-3/8)
193-EE__D 193R-EE__D 193S-EE__D	100-C30 100-C37	45 (1-25/32)	146.6 (5-25/32)	101.2 (3-63/64)	4.5 (3/16)	13.9 (35/64)	24.5 (31/32)	104 (4-3/32)	60 (2-23/64)	35 (1-3/8)
193-EE__D 193R-EE__D 193S-EE__D	100-C43	54 (2-1/8)	146.6 (5-25/32)	101.2 (3-63/64)	4.5 (3/16)	18.9 (3/4)	24.5 (31/32)	104 (4-3/32)	60 (2-23/64)	45 (1-25/32)
193-EE__E 193R-EE__E 193S-EE__E	100-C60 100-C72 100-C85	72 (2-53/64)	192.3 (7-37/64)	120.4 (4-3/4)	5.4 (7/32)	23.8 (15/16)	29 (1-9/64)	125.5 (4-15/16)	100 (3-15/16)	55 (2-11/64)

Dimensions are shown in millimeters (inches). Dimensions are not intended to be used for manufacturing purposes.

**Panel Adaptor Mounted**



Panel Adaptor Cat. No.	Overload Cat. No.	A Width	B Height	C Depth	D	E1	E2	F	H1	H2	H3	J
193-EPB	193-ED_B	45 (1-25/32)	116.5 (4-19/16)	92.7 (3-21/32)	4.4 (11/64)	11.4 (29/64)	57.9 (2-9/32)	62.5 (2-15/32)	95 (3-3/4)	30 (1-3/16)	75 (2-31/32)	52.1 (2-3/64)
	193-EE_B											
	193R-EE_B											
193-EPD	193-EE_D	45 (1-25/32)	112.4 (4-7/16)	108.7 (4-9/32)	4.4 (11/64)	11.4 (29/64)	57.9 (2-9/32)	62.5 (2-15/32)	95 (3-3/4)	30 (1-3/16)	75 (2-31/32)	52.1 (2-3/64)
	193R-EE_D											
	193S-EE_D											
193-EPE	193-EE_E	72 (2-53/64)	107.4 (4-15/64)	127 (5/32)	5.5 (5/32)	26.4 (1-1/32)	54.5 (2-9/64)	48.3 (1-29/32)	90 (3-23/64)	60 (2-23/64)	—	43.3 (1-45/64)
	193R-EE_E											
	193S-EE_E											

**DIN Rail / Panel Adaptor - Terminal Cross Sections**

		Cat. No. 193-EPB ①	Cat. No. 193-EPD ①	Cat. No. 193-EPE
Flexible-Stranded with Ferrule	Single Conductor	1.0...4.0 mm <sup>2</sup>	2.5...16 mm <sup>2</sup>	4.0...35 mm <sup>2</sup>
	Torque	1.8 N-m	2.3 N-m	4.0 N-m
	Two Conductor	1.0...4.0 mm <sup>2</sup>	2.5...10 mm <sup>2</sup>	4.0...25 mm <sup>2</sup>
	Torque	1.8 N-m	2.3 N-m	4.0 N-m
Coarse-Stranded / Solid	Single Conductor	1.5...6.0 mm <sup>2</sup>	2.5...25 mm <sup>2</sup>	4.0...50 mm <sup>2</sup>
	Torque	1.8 N-m	2.3 N-m	4.0 N-m
	Two Conductor	1.5...6.0 mm <sup>2</sup>	2.5...16 mm <sup>2</sup>	4.0...35 mm <sup>2</sup>
	Torque	1.8 N-m	2.3 N-m	4.0 N-m
Stranded / Solid	Single Conductor	14...8 AWG	16...6 AWG	12...1 AWG
	Torque	16 lb-in	20 lb-in	35 lb-in
	Two Conductor	14...10 AWG	16...6 AWG	12...2 AWG
	Torque	16 lb-in	20 lb-in	35 lb-in

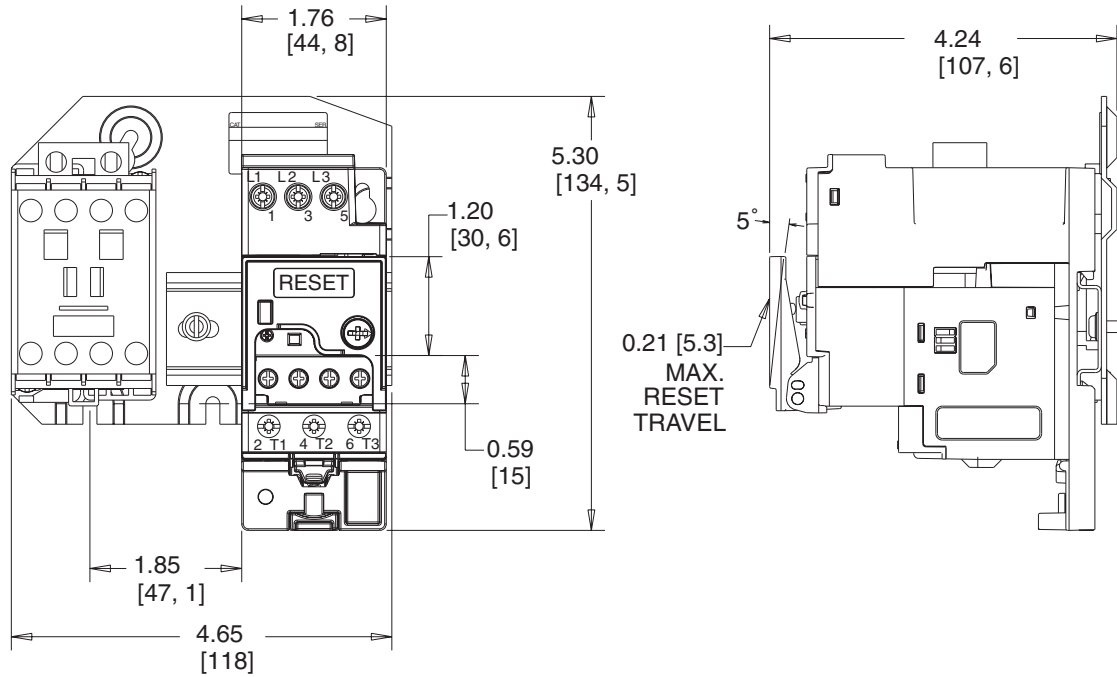
① For multiple conductor applications, the same size and style wire must be used.

# E1 Plus Solid-State Overload Relays

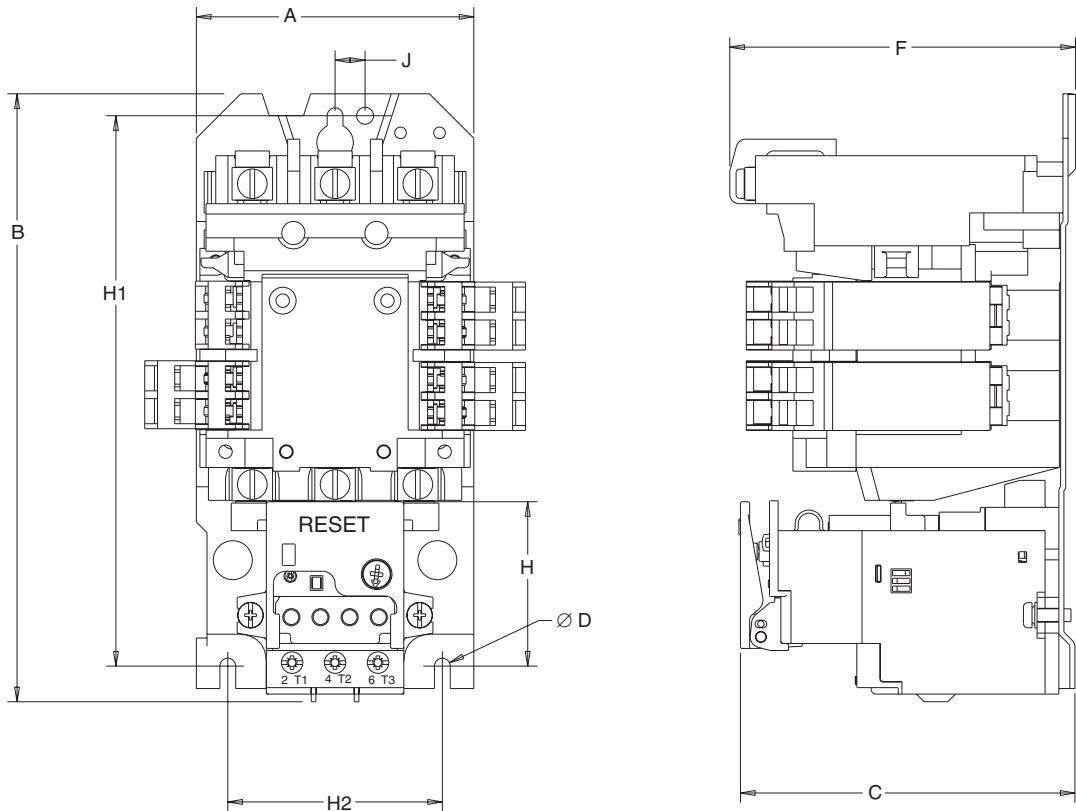
## Approximate Dimensions, Continued

Approximate dimensions are shown in millimeters (inches). Dimensions are not intended to be used for manufacturing purposes.

### Size 00



### Size 0...3



Overload Cat. No.	Contactor Cat. No.	A	B	C	D	F	H1	H2	J
592-EE_C	Size 0, 1	91 (3-9/16)	198 (7-25/32)	114 (4-1/2)	5.2 (13/64)	113 (4-7/16)	180 (7-1/16)	70 (2-3/4)	9.8 (3/8)
592-EE_C	Size 2	100 (3-15/16)	233 (9-11/64)	114 (4-1/2)	5.2 (13/64)	119 (4-11/16)	219 (8-5/8)	80 (3-5/32)	9.8 (3/8)
592-EE_D	Size 3	155.5 (6-1/8)	336.7 (13-1/4)	154 (6-1/16)	7.1 (9/32)	150.1 (5-29/32)	219.9 (8-21/32)	139.9 (5-1/2)	19.9 (25/32)